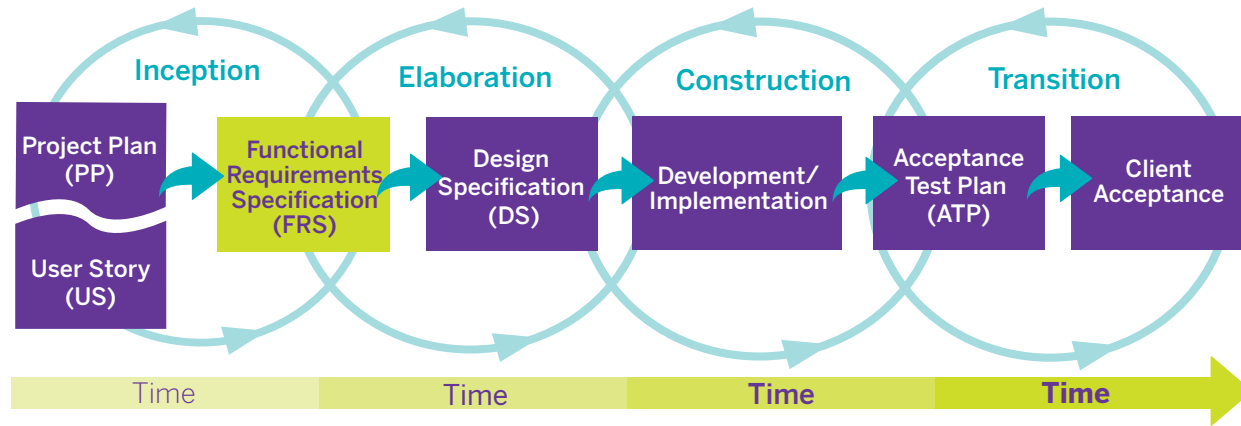


# Our process

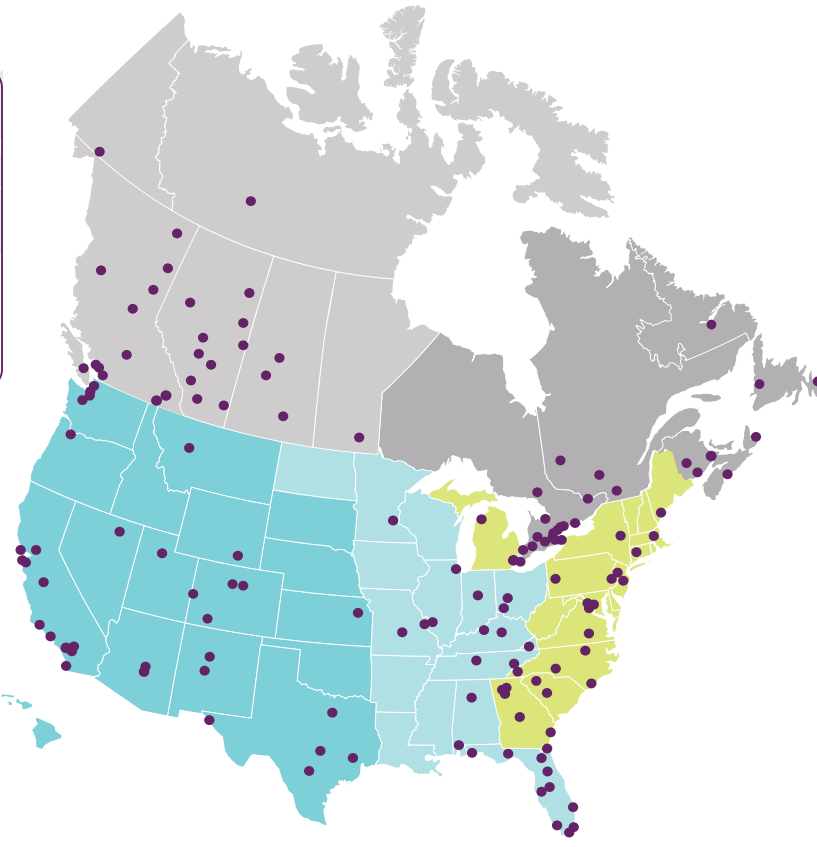
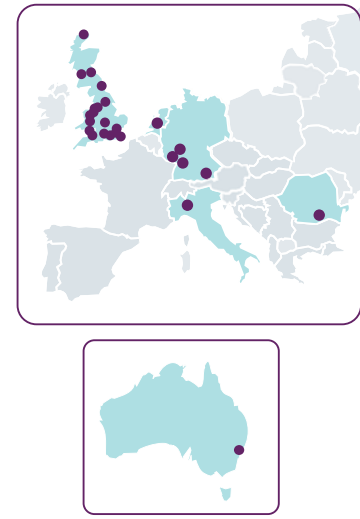
## aim<sup>2</sup>

Amec Foster Wheeler's Information Management Methodology, **aim<sup>2</sup>**, is a structured delivery process that emphasizes continuous client involvement to ensure that the deliverable and specifications meets user requirements.



# Information Management Technology Services Environment & Infrastructure

- Portland, ME**  
503.639.3400
- Phoenix, AZ**  
602.733.6000
- Calgary, Alberta**  
403.248.4331
- Indianapolis, IN**  
317.713.1700
- Ottawa, Ontario**  
613.727.0658
- Westford, MA**  
978.692.9090
- Nashville, TN**  
615.333.0630
- Chantilly, VA**  
703.488.3700
- Oakland, CA**  
510.663.4100
- Kaiserslautern, Germany**  
+49 (0)631 4140160
- Shrewsbury, UK**  
+44 (0)1743 342000
- Brisbane, Australia**  
+61 7 3033 5600



- [twitter.com/amec\\_fw](https://twitter.com/amec_fw)
- [linkedin.com/company/amecfw](https://linkedin.com/company/amecfw)
- [youtube.com/user/amecfw](https://youtube.com/user/amecfw)
- [facebook.com/amecfw](https://facebook.com/amecfw)

[amecfw.com](http://amecfw.com)



connected  
excellence  
in all we do

[amecfw.com](http://amecfw.com)



# connected excellence in all we do

## The Amec Foster Wheeler advantage

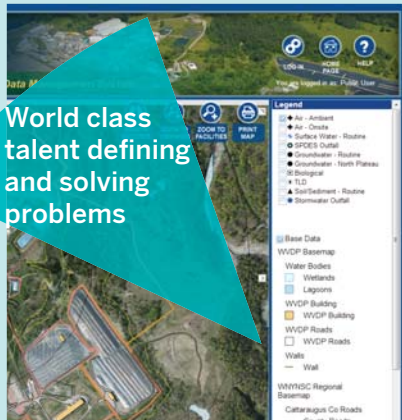
Amec Foster Wheeler's Information Management Technology Services provides technology solutions that complement our traditional engineering services by adding efficiency to our projects and value for our clients.

### Services

#### Technology Consulting

- ▶ **U.S. Army and Air National Guard.** Amec Foster Wheeler has worked with several states to develop technology plans that supported the national, state, and local missions of the national guard.
- ▶ **State of Missouri Emergency Management Agency (SEMA).** Amec Foster Wheeler updated SEMA's Hazard Mitigation Plan to update the vulnerability of state facilities to hazards such as earthquake, tornado, and dam failures to achieve EMAP Certification.
- ▶ **US Department of Energy – West Valley Data Management System (DMS).** Amec Foster Wheeler developed a data management system to store and manage environmental data collected during the implementation of WVDP Phase I decommissioning activities, the WVDP Environmental Monitoring Program, and the New York State Energy Research and Development Authority (NYSERDA) monitoring program.

World class talent defining and solving problems



#### Database Services

- ▶ **Bureau of Ocean Energy Management EcoSpatial Information Database (ESID).** The ESID is an ecological database of the Atlantic Outer Continental Shelf to support offshore energy leasing decisions.
- ▶ **Canadian Forces Goose Bay Remediation Project.** Amec Foster Wheeler created a geospatial database of over 13,000 sampling sites, chemical tests, and documents into a geospatially enabled database accessible via a map interface.
- ▶ **Camp Navajo Environmental Data Management System** Amec Foster Wheeler designed and developed a web-based Environmental Data Management System (EDMS) to view maps and upload and download GIS, chemistry and unexploded ordinance (UXO) data.

Developing the foundation of enterprise solutions



#### Geospatial Services

- ▶ **U.S. Army Corps of Engineers-Center Hill Dam Failure Mapping.** The Nashville District of USACE contracted Amec Foster Wheeler to analyze the theoretical failure of Center Hill Dam and the resulting flooding downstream.
- ▶ **FEMA DFIRM Mapping.** Amec Foster Wheeler is currently producing Digital Flood Insurance Rate Maps (DFIRM) for FEMA and partnering states.
- ▶ **Colorado River Water Availability Study, Colorado Water Conservation Board.** Amec Foster Wheeler geographically modeled projections of future temperature and precipitation in the Colorado River Basin based on a variety of projections of future greenhouse gas concentrations and GCMs.

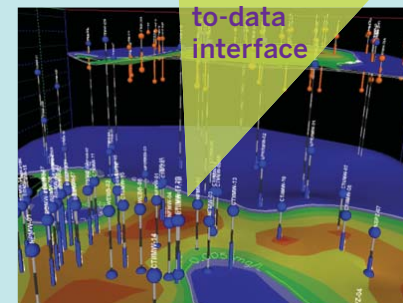
Implementing practical location-based solutions



#### Visualization and Simulation

- ▶ **ExxonMobil Refinery/Chemical Plant, Beaumont, Texas.** Amec Foster Wheeler developed an interactive visualization product consisting of 13 3D geologic models and predictive simulations to support site management, communication and regulatory compliance. Amec Foster Wheeler also developed an interactive 3D protective berm volumetric calculation and construction planning solution.
- ▶ **Total Col-Tex Superfund Site, Colorado City, Texas.** Amec Foster Wheeler authored a package that included 3D topography over 4D subsurface chemistry animations depicting fluctuations for stacked water bearing units over 7 years. The product was used for regulatory communication and compliance, project management, and performance tracking.

Advancing the human-to-data interface



#### Decision Support Systems

- ▶ **Tennessee DOT Statewide Environmental Management System.** Amec Foster Wheeler is assisting in development of environmental management and collaboration tools to improve the NEPA process at TDOT.
- ▶ **Critical Infrastructure Protection & Resiliency.** Amec Foster Wheeler is engaging water resources, GIS, and hazard mitigation to develop and support the Critical Infrastructure Protection and Resiliency program for the U.S. Army Corps of Engineers.
- ▶ **U.S. Army Corps of Engineers-Wolf Creek Dam.** Amec Foster Wheeler incorporated 60 years of CAD drawings, images, bore logs, spreadsheets, and photos into a database linked with spatial features.

Turning data into information



Delivering on our promises

Solutions for unique problems



#### Application services

- ▶ **Sensor Polling.** Web Portals for sensor polling, display and analysis of any type of sensor for display on Smartphones and Browsers.
- ▶ **Roadway Weather Information System (RWIS).** Amec Foster Wheeler developed the Canadian RWIS to provide current and predictive information including the location and timing of the occurrence of black ice on roads.

#### Remote sensing

- ▶ **Urban Tree Canopy Assessment, St. Louis, MO.** This project mapped and calculated the value of the urban tree canopy cover to serve as a benchmark to measure the success of future tree planting.
- ▶ **Wichita Levee Modeling.** Amec Foster Wheeler utilized terrestrial LIDAR to obtain high definition scan data for bridges associated with the levee system and created a 3D model to incorporate into hydraulic models.

Visualize the problem and the solution

